

Exhibit 2  
in support of  
Appellants' Motion to Expedite and Consolidate Proceedings in  
*Ctr. for Biological Diversity et al. v. Salazar et al.*,  
Civ. No. 11-35670  
(Idaho Fish and Game – Wolf Seasons 2011-2012)



**2nd DRAWING FOR BIG GAME CONTROLLED HUNTS**  
Apply August 5 - August 15.

**Buy Licenses Here!**

**REGIONS**

Click Here!

<b>Hunting</b>	<b>Fishing</b>	<b>Licenses</b>	<b>Wildlife</b>	<b>Education</b>	<b>Media</b>	<b>Science</b>	<b>Enforcement</b>	<b>About Us</b>
Hunting Calendar	Seasons and Rules	Controlled Hunt Information	Hunter Education	Idaho's Super Hunts	Game Species Information			
Hunting Access / Maps	Harvest Quotas / Limits	Applications / Forms	Mandatory Hunt Report	Trapping/Hunting Report for Furtakers	Big Game			

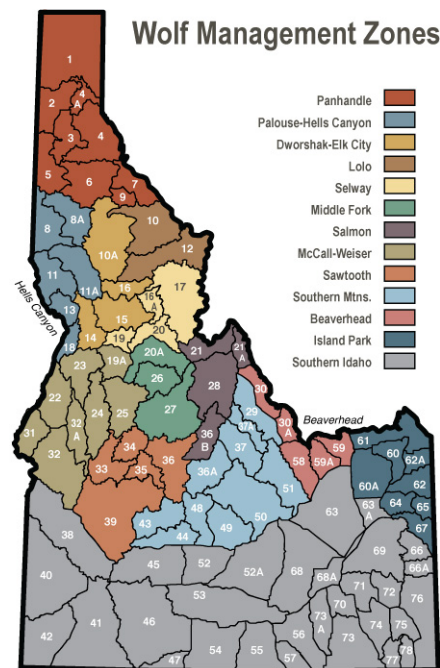
Thursday, August 11, 2011

## Wolf Seasons - 2011-2012

On July 28, 2011, the Idaho Fish and Game Commission set wolf hunting and trapping seasons based on Idaho Fish and Game proposals and public input.

- The primary objective is to use hunting and trapping as a means to reduce the statewide wolf population to a level that is sustainable, meets federal recovery goals, and reduces conflicts statewide.
- Specific proposals seek to maximize wolf harvest opportunities where wolf conflicts are the greatest.
- Mandatory harvest reporting provides valuable information for ongoing monitoring and future season adjustments.

[Wolf Season Key Points / Questions & Answers](#)



### Wolf Hunting Season

The Idaho Fish and Game Commission set wolf hunting seasons throughout most of the state ranging from August 30, 2011 to March 31, 2012, in 13 wolf management zones.

Harvest limits were set in the Salmon, Southern Mountain, Beaverhead, Island Park and Sawtooth Zones, where hunting proved effective in more open country and additional wolf mortality occurs from control actions to resolve ongoing livestock deprecations.

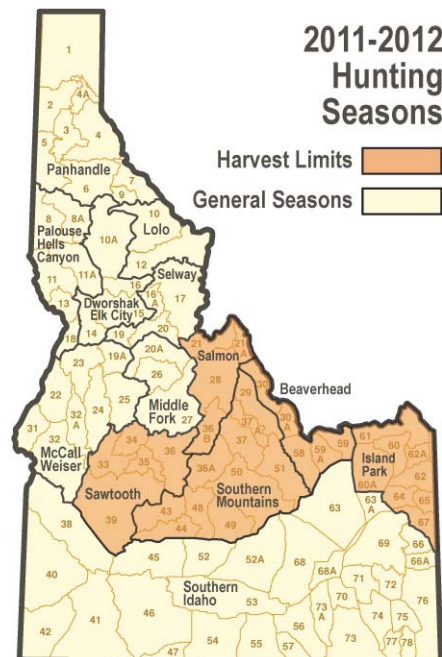
In 2009, hunters met harvest limits in these zones except in the Sawtooth Zone, which was 90 percent achieved. The commission set higher harvest limits for these zones for the upcoming hunting season to reduce continued conflict with livestock.

Recent research confirms wolves are dispersing throughout the northern Rocky Mountains, and Idaho wolves are breeding with populations in other states and vice versa. Nevertheless, the commission set a closing date of December 31 for the Beaverhead and Island Park Zones, which closes hunting prior to the peak snowmobile season in Island Park and corresponds to the closing dates in Montana. These zones are late winter/spring dispersal areas between Yellowstone Park and other wolf populations in Montana and Wyoming.

The Fish and Game Commission did not set specific harvest limits in the Panhandle, Lolo, Selway and Middle Fork Zones because of documented impacts to elk and other prey species. Terrain or access is difficult in these areas and hunters did not reach harvest limits in the Panhandle, Lolo, and Selway Zones in 2009. Fish and Game isn't proposing specific harvest limits in the Palouse-Hells Canyon, Dworshak-Elk City, McCall-Weiser, and Southern Idaho Zones because of high conflict potential with livestock and other domestic animals.

Fish and Game uses a similar strategy for black bears and mountain lions, which have long been under state management. In general, both populations are thriving in Idaho.

Hunters will be required to report wolf harvests within 72 hours and bring harvested wolves to Fish and Game to confirm gender, approximate age, kill location and other information. In 2009, less than one-percent of hunters who purchased an Idaho wolf tag were successful. To increase



harvest rates in 2011, Fish and Game will allow electronic calls and increase the annual bag limit to two wolves for hunters.

**2011-2012 Wolf Hunting Season:**

- Standard hunting season dates statewide: Aug 30 - Mar 31, except for Aug 30 - Dec 31 in Island Park and Beaverhead wolf management zones and Aug 30 - June 30 in Lolo and Selway zones.
- Hunters may buy 2 tags per calendar year.
- Bag limit: No person may take more than one wolf per legal tag in his or her possession.
- Wolf seasons are Any-Weapon seasons.
- Electronic calls may be used statewide.
- Wolves may be taken incidentally during fall bear baiting.
- Reduced-price nonresident wolf tags (\$31.75) statewide.
- Hunters must report killing a wolf within 72 hours. Hunters must present skull and hide to IDFG office within 10 days.
- The wolf season closes when the harvest limit for that zone is reached or the season closing date, whichever comes first.

Wolf Hunting Seasons			
Zone (Hunting Units)	Season Dates	Harvest Limit	Notes
<b>Panhandle</b> (1, 2, 3, 4, 4A, 5, 6, 7, 9)	Aug 30 - Mar 31		
<b>Palouse-Hells Canyon</b> (8, 8A, 11, 11A, 13, 18)	Aug 30 - Mar 31		
<b>Lolo</b> (10, 12)	Aug 30 - June 30		
<b>Dworshak-Elk City</b> (10A, 14, 15, 16)	Aug 30 - Mar 31		
<b>Selway</b> (16A, 17, 19, 20)	Aug 30 - June 30		
<b>Middle Fork</b> (20A, 26, 27)	Aug 30 - Mar 31		
<b>Salmon</b> (21, 21A, 28, 36B)	Aug 30 - Mar 31	40	
<b>McCall-Weiser</b> (19A, 22, 23, 24, 25, 31, 32, 32A)	Aug 30 - Mar 31		Motorized hunting restrictions apply in some units. Please see Page 70 of the <a href="#">big game brochure</a> .
<b>Sawtooth</b> (33, 34, 35, 36, 39)	Aug 30 - Mar 31	60	
<b>Southern Mountains</b> (29, 36A, 37, 37A, 43, 44, 48, 49, 50, 51)	Aug 30 - Mar 31	25	Motorized hunting restrictions apply in some units. Please see Page 70 of the <a href="#">big game brochure</a> .
<b>Beaverhead</b> (30, 30A, 58, 59, 59A)	Aug 30 - Dec 31	10	Motorized hunting restrictions apply in some units. Please see Page 70 of the <a href="#">big game brochure</a> .
<b>Island Park</b> (60, 60A, 61, 62, 62A, 64, 65, 67)	Aug 30 - Dec 31	30	Motorized hunting restrictions apply in some units. Please see Page 70 of the <a href="#">big game brochure</a> .
<b>Southern Idaho</b> (38, 40, 41, 42, 45, 46, 47, 52, 52A, 53, 54, 55, 56, 57, 63, 63A, 66, 66A, 68, 68A, 69, 70, 71, 72, 73, 73A, 74, 75, 76, 77, 78)	Aug 30 - Mar 31		Motorized hunting restrictions apply in some units. Please see Page 70 of the <a href="#">big game brochure</a> .

**2011-2012 Wolf Trapping Season**

Based on hunter success in 2009 and the inability of hunting pressure to manage wolves across most of their range in North America, the Fish and Game Commission set a trapping season from November 15 through March 31 in all or some of the Panhandle, Lolo, Dworshak-Elk City, Selway and Middle Fork Zones.

These include areas where access is limited, terrain is difficult, but where wolves are having significant impacts on other big game animals or approaching isolated communities such as Elk City.

Fish and Game will evaluate Idaho trapper participation, catch rates, gear effectiveness, incidental take and potential conflicts with other uses.

With support of the Idaho Trappers Association, state regulations require wolf-specific training before trapping for wolves, reporting requirements, and restrictions on the types of traps used. The commission set an annual bag limit of five wolves for trapping.

**Goals**

A goal of wildlife managers is to reduce wildlife related conflicts with people, domestic animals, and other wildlife. Conflicts can occur where bears, wolves and mountain lions threaten people or domestic animals or suppress other game populations. They can occur where beavers and raccoons cause property damage, or where elk and deer eat too many crops.

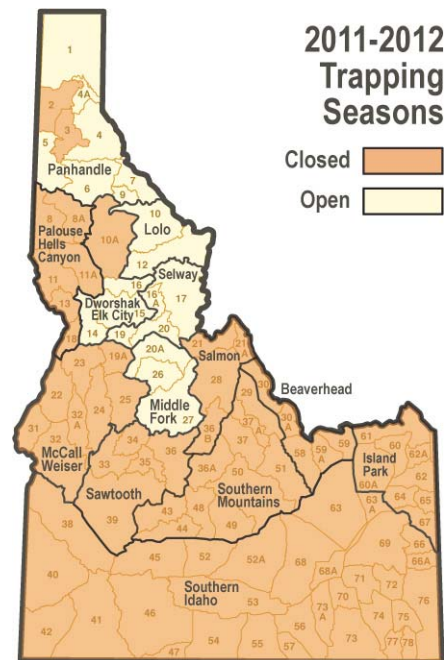
We recognize that public views on wolf hunting and trapping range from those who strongly oppose any harvest of wolves to those who strongly oppose any wolves in Idaho. Neither view can be accommodated under federal or state law.

To continue to meet federal delisting criteria, Fish and Game will manage for at least 150 wolves and 15 breeding pairs of wolves in Idaho. Given harvest experience in Idaho, Montana, Alaska and Canadian provinces, it is highly unlikely that a single hunting and trapping season could reduce Idaho's wolf numbers to a level that would compromise our ability to meet recovery goals. Idaho currently has more than 1,000 wolves.

**Wolf Harvest and Population Monitoring**

Fish and Game biologists will closely track harvest through mandatory reports and check in. Wolf populations are closely monitored using radio telemetry (70-80 wolves are currently wearing active radio collars) to determine a minimum estimate of packs, breeding pairs and total wolves.

The Fish and Game Commission will review the number and distribution of wolf harvest at its November and January meetings. Biologists may brief the Commission at any time if other



sources of wolf mortality significantly increase, or if mid-winter population estimates indicate concerns. Fish and Game will also evaluate and initiate any control actions if needed based on continued conflict potential and low public harvest.

Fish and Game will make up-to-date zone-based harvest information available to the public via the Fish and Game website.

### 2011-2012 Wolf Trapping Season:

- Trapping season dates: November 15 - March 31.
- Trappers may buy up to 3 tags with trapping license for use in those zones with an open trapping season in addition to 2 tags purchased for hunting; un-used tags from hunting season (up to 2) may also be used to tag trapped wolves.
- Bag limit: No person may take more than one wolf per legal tag in his or her possession.
- Methods of take: Both snares and foothold traps w/ jaw spread not to exceed 9 inches are legal during wolf trapping season.
- Tags purchased for trapping may be used to take wolves through hunting where and when the wolf trapping season is open.
- Baiting regulations for trapping wolves are consistent with regulations for furbearers.
- Mandatory trapping education class required before purchasing tags for wolf trapping.
- 72 hour trap check requirement, same as for furbearer trapping.
- Reduced price nonresident wolf tags (\$31.75) statewide.
- Mandatory report within 72 hours of kill; mandatory check within 10 days.

Wolf Trapping Seasons		
Zone (Hunting Units)	Trapping Season Dates	Notes
<b>Panhandle</b> (1, 2, 3, 4, 4A, 5, 6, 7, 9)	Nov 15 - Mar 31	Trapping season open in Units 1, 4, 4A, 5, 6, 7, 9. Units 2 and 3 CLOSED.
<b>Palouse-Hells Canyon</b> (8, 8A, 11, 11A, 13, 18)	CLOSED	
<b>Lolo</b> (10, 12)	Nov 15 - Mar 31	
<b>Dworshak-Elk City</b> (10A, 14, 15, 16)	Nov 15 - Mar 31	Trapping season open in Units 14, 15, 16 only. Unit 10A CLOSED.
<b>Selway</b> (16A, 17, 19, 20)	Nov 15 - Mar 31	
<b>Middle Fork</b> (20A, 26, 27)	Nov 15 - Mar 31	
<b>Salmon</b> (21, 21A, 28, 36B)	CLOSED	
<b>McCall-Weiser</b> (19A, 22, 23, 24, 25, 31, 32, 32A)	CLOSED	
<b>Sawtooth</b> (33, 34, 35, 36, 39)	CLOSED	
<b>Southern Mountains</b> (29, 36A, 37, 37A, 43, 44, 48, 49, 50, 51)	CLOSED	
<b>Beaverhead</b> (30, 30A, 58, 59, 59A)	CLOSED	
<b>Island Park</b> (60, 60A, 61, 62, 62A, 64, 65, 67)	CLOSED	
<b>Southern Idaho</b> (38, 40, 41, 42, 45, 46, 47, 52, 52A, 53, 54, 55, 56, 57, 63, 63A, 66, 66A, 68, 68A, 69, 70, 71, 72, 73, 73A, 74, 75, 76, 77, 78)	CLOSED	

Last Updated: August 10, 2011

[Top of page](#)

[Contact Us](#) [Employment](#) [Volunteer](#) [Privacy Policy](#) [Terms and Conditions](#) © 2011 Idaho Fish and Game



Buy Licenses



Hunt Planner



Hunter Ed



Fishing Planner



IFWF



Super Hunt



Access Yes



Report A Poacher



Hunt Report